

Stem PN	Size	A Insertion Depth	B Muzzle Break Clearance (Length)	C Adapter Interface (Interior)	D Adapter Interface (Exterior)	E Muzzle Break Clearance (Dia.)
S-1556	5.56	1.432	2.377	3.452	0.357	0.446
S-1000ISR	7.62	2.194	6.190	3.479	4.905	0.447
S-1000-8	7.62	1.211	2.539	3.214	0.536	0.450
S-1000OTK	7.62	1.174	5.704	6.452	0.426	0.444
S-1000E	7.62	1.211	5.299	3.134	3.376	0.455
S-1000	7.62	1.211	3.846	3.214	1.843	0.450
S-S001	NA	-	-	1.796	0.861	0.446

MATERIAL	
FINISH	
UNLESS OTHERWISE NOTED	
.X = ±.020	.XX = ±.010
.XXX = ±.005	.XXXX = ±.0005
FRACTIONS ± 1/64"	
ANGLES ± 1°	
CONCENTRICITY TIR=.001	
PERPENDICULARITY TIR=.001	
PARALLELISM TIR=.001	
BREAK ALL SHARP EDGES ALL DIMENSIONS IN INCHES	

**NOTICE**

THIS DRAWING AND THE SUBJECT MATTER DISCLOSED HEREIN ARE PROPRIETARY ITEMS TO WHICH GRAFLEX INC. RETAINS THE EXCLUSIVE RIGHT OF DISSEMINATION, REPRODUCTION, MANUFACTURE AND SALE. THE DRAWING, PRINT OR DOCUMENT IS SUBMITTED IN CONFIDENCE FOR CONSIDERATION BY THE RECIPIENT ALONE UNLESS PERMISSION FOR FURTHER DISCLOSURE IS EXPRESSLY GRANTED IN WRITING.

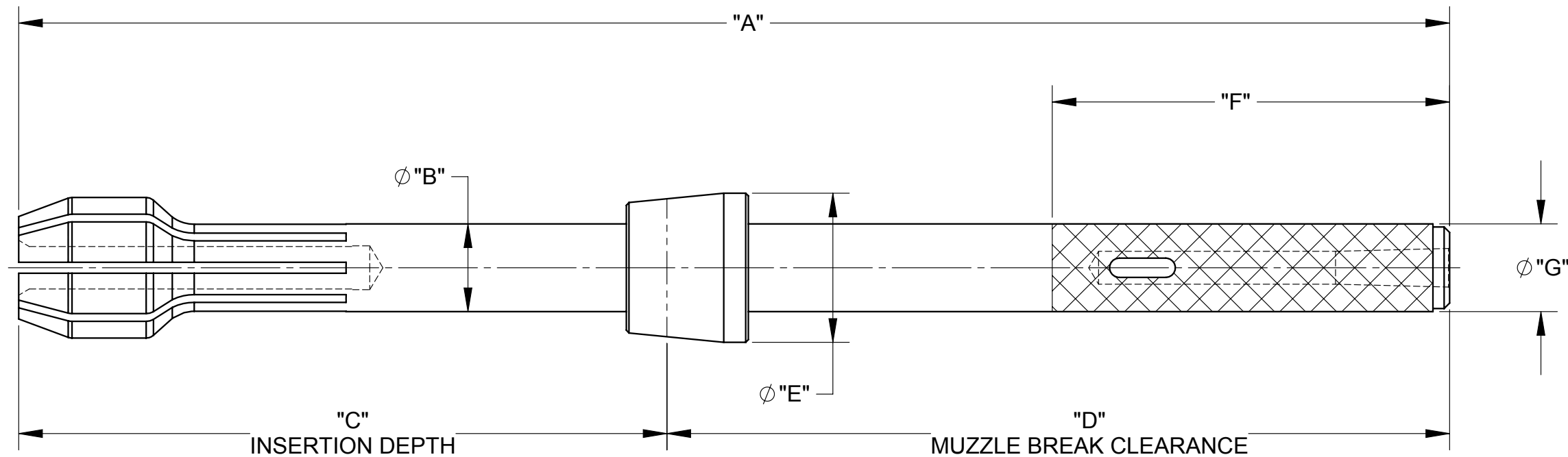
DATE: **08-07-2014**

**GRAFLEX INCORPORATED**  
 15855 Assembly Loop Suite 100 - Jupiter, FL 33478  
 (561) 691-5959 fax (561) 691-5983

TITLE: **STEM**

SIZE	CAGE CODE	DWG NO	REV
<b>B</b>	<b>00ZS7</b>		<b>-</b>

SCALE - **BOB TOSI** SHEET **1 OF 1**



Adapter PN	Size	A Overall Length	B Lower Shaft Diameter	C Insertion Depth	D Muzzle Break Clearance (Length)	E Tapered Section Max OD	F Knurled Section (Length)	G Muzzle Break Clearance (Dia.)
1-1556	5.56	6.816	0.216	1.540	5.276	-	2.190	0.610
1-1006.3	12.7	7.682	0.400	2.914	4.768	-	2.190	0.610
1-1006L	12.7	11.200	0.400	5.573	5.627	-	2.190	0.610
1-S006	12.7	9.450	0.400	3.823	5.627	-	2.190	0.610
KB-1006	12.7	13.132	0.400	5.312	7.820	-	2.190	0.610
1-1006ISR	12.7	12.730	0.400	5.630	7.100	-	2.170	0.610
1-1145	14.5	11.004	0.391	6.068	4.936	-	2.190	0.610
1-1020	20	19.330	0.700	8.865	10.465	-	4.528	1.063
1-1002	25	19.330	0.787	9.417	9.913	-	4.528	1.063
1-1007	30	20.500	0.887	8.667	11.833	1.244	4.528	1.000
1-1009	40	16.305	1.000	7.396	8.909	1.700	4.528	1.000

MATERIAL  
FINISH  
UNLESS OTHERWISE NOTED  
.X = ±.020 .XX = ±.010  
.XXX = ±.005 .XXXX = ±.0005  
FRACTIONS ± 1/64"  
ANGLES ± 1°  
CONCENTRICITY TIR=.001  
PERPENDICULARITY TIR=.001  
PARALLELISM TIR=.001  
BREAK ALL SHARP EDGES  
ALL DIMENSIONS IN INCHES

**NOTICE**  
THIS DRAWING AND THE SUBJECT  
MATTER DISCLOSED HEREIN ARE  
PROPRIETARY ITEMS TO WHICH  
GRAFLEX INC. RETAINS THE  
EXCLUSIVE RIGHT OF  
DISSEMINATION, REPRODUCTION,  
MANUFACTURE AND SALE. THE  
DRAWING, PRINT OR DOCUMENT IS  
SUBMITTED IN CONFIDENCE FOR  
CONSIDERATION BY THE RECIPIENT  
ALONE UNLESS PERMISSION FOR  
FURTHER DISCLOSURE IS  
EXPRESSLY GRANTED IN WRITING.  
DATE: 08-08-2014

**GRAFLEX INCORPORATED**  
15855 Assembly Loop Suite 100 - Jupiter, FL 33478  
(561) 691-5959 fax (561) 691-5983  
TITLE  
**ADAPTER**  
SIZE CAGE CODE DWG NO REV  
B 00ZS7 -  
SCALE - BOB TOSI SHEET 1 OF 1