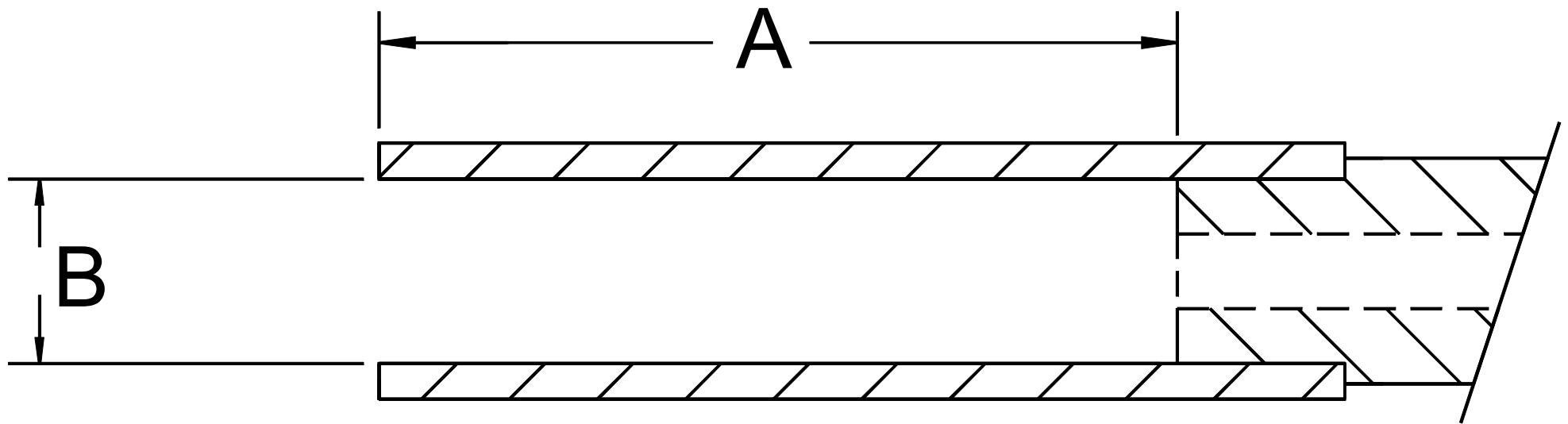


Muzzle Brake Dimensional Requirements Diagram



1. Please provide the "working length" (noted as "A" in the diagram) of the muzzle brake. The working length is described as the length from the outer edge of the muzzle brake to the muzzle of the gun barrel itself.
2. Please provide the inside diameter of the muzzle brake noted as "B" in the diagram. If the muzzle brake is tapered, please provide the smallest inside diameter.

NOTICE THIS DRAWING AND THE SUBJECT MATTER DISCLOSED HEREIN ARE PROPRIETARY ITEMS TO WHICH GRAFLEX, INC. RETAINS THE EXCLUSIVE RIGHT OF DISSEMINATION, REPRODUCTION, MANUFACTURE AND SALE. THE DRAWING, PRINT OR DOCUMENT IS SUBMITTED IN CONFIDENCE FOR CONSIDERATION BY THE RECIPIENT ALONE UNLESS PERMISSION FOR FURTHER DISCLOSURE IS EXPRESSLY GRANTED IN WRITING.		GRAFLEX INCORPORATED 15855 Assembly Loop Suite 100 - Jupiter, FL 33478 (561) 691-5959 fax (561) 691-5983	
TITLE		Small Cal Muzzle Brake Info.	
SIZE	CAGE CODE	DWG NO	REV
C	00ZS7		1
Date:	06-14-2014	SCALE	STEPHEN TEKLENSKI SHEET