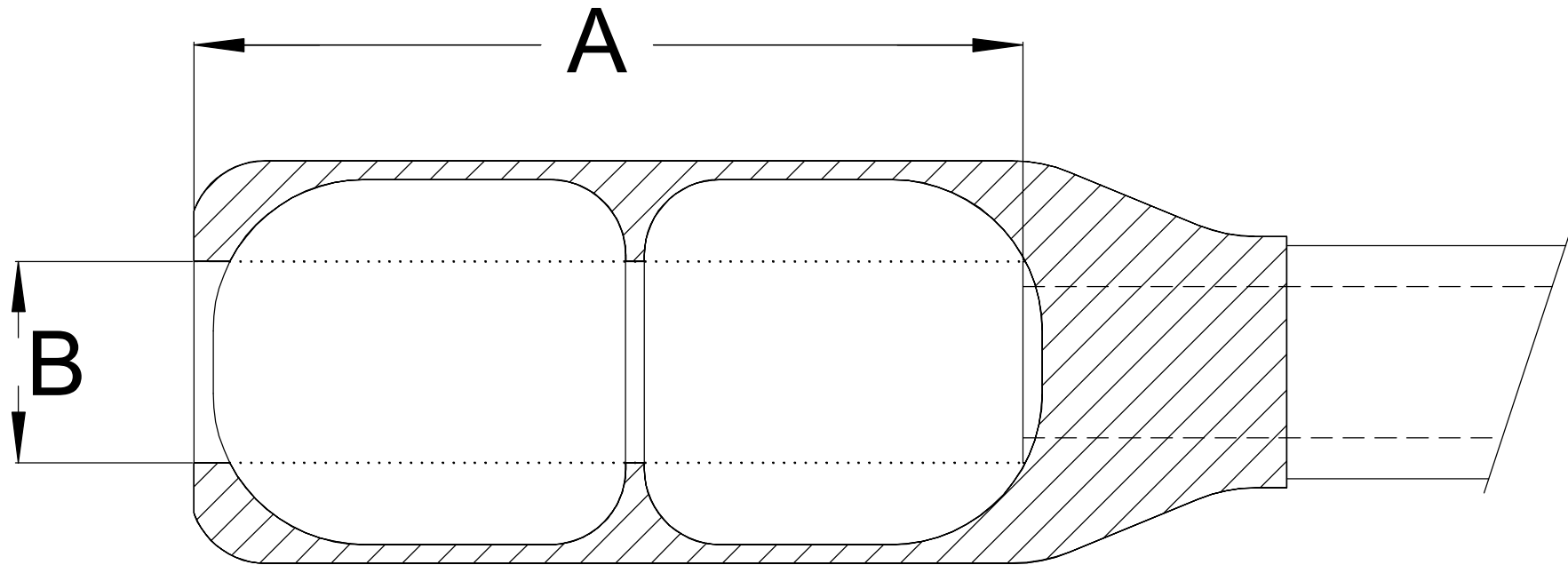


Muzzle Brake Dimensional Requirements Diagram



1. Please provide the "working length" (noted as "A" in the diagram) of the muzzle brake. The working length is described as the length from the outer edge of the muzzle brake to the muzzle of the gun barrel itself.
2. Please provide the inside diameter of the muzzle brake noted as "B" in the diagram. If the muzzle brake is tapered, please provide the smallest inside diameter.

NOTE: Some (normally over 150mm) large caliber muzzle brakes will include a "web" for support or strength, this "web" may be the smallest **INSIDE** dimension of the muzzle brake and should also be measured (if applicable).

NOTICE		GRAFLEX INCORPORATED	
THIS DRAWING AND THE SUBJECT MATTER DISCLOSED HEREIN ARE PROPRIETARY ITEMS TO WHICH GRAFLEX, INC. RETAINS THE EXCLUSIVE RIGHT OF DISSEMINATION, REPRODUCTION, MANUFACTURE AND SALE. THE DRAWING, PRINT OR DOCUMENT IS SUBMITTED IN CONFIDENCE FOR CONSIDERATION BY THE RECIPIENT ALONE UNLESS PERMISSION FOR FURTHER DISCLOSURE IS EXPRESSLY GRANTED IN WRITING.		15855 Assembly Loop Suite 100 - Jupiter, FL 33478 (561) 691-5959 fax (561) 691-5983	
TITLE Large Cal Muzzle Brake Info.			
SIZE C	CAGE CODE 00ZS7	DWG NO	REV
Date: 06-14-2014	SCALE	STEPHEN TEKLI NSKI	SHEET